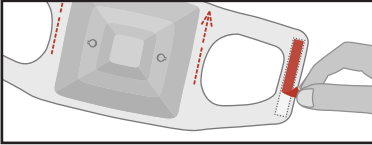


# Raku-Ryu Cup Wide

## Instructions For Use

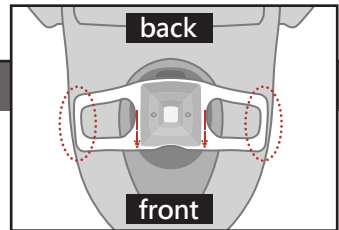
### Step1. Preparation



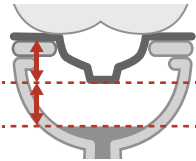
Peel the paper lining from the double-sided tape on the back.  
Caution: The paper lining is not flushable

### Step2. Placement

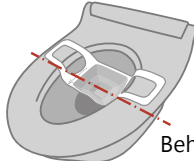
Attach the sheet to a clean, dry toilet seat or bowl.  
Note: Use only on a dry toilet seat.



Side view

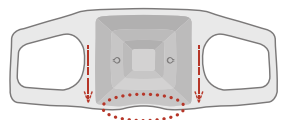


Top view



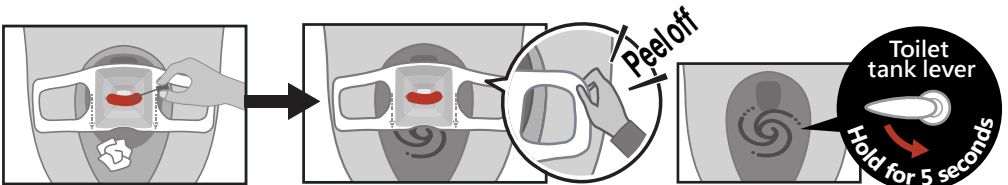
Behind the center line

Placement direction



The notched area should face the front of the toilet

### Step3. Sample Collection and Disposal



After collecting the stool sample, flush any used toilet paper first.  
Gently peel off the product to avoid leaving adhesive on the toilet seat.  
Flush the product along with the stool.

If it doesn't flush completely the first time:

Tilt the toilet tank lever fully and hold it for 5 seconds. If adhesive tape sticks to the toilet bowl, scrub it off with a toilet brush or similar tool.



Watch the video here for more details >>>

## Warnings

- This product is not edible. Do not ingest.
- This product is designed exclusively for stool sample collection. Do not use for any other purpose.
- This product is not hypoallergenic. Individuals with allergies should evaluate its use at their discretion.
- Improper uses of this product include uses that do not conform to the following usages.

## Usage Notes

- Do not flush this product together with accumulated toilet paper in the toilet bowl. It may cause clogging.
- Ensure the toilet tank is filled with sufficient water before flushing.
- Damage or malfunction of the toilet or surrounding equipment caused by improper use of this product is not covered under warranty.
- If the product or toilet seat is wet, the product may tear during use.
- Use only one sheet at a time. Using multiple sheets simultaneously may clog the drain.
- Do not shake the product violently with stool inside
- Do not leave the product in the toilet for an extended period. Flush promptly after use.
- Keep out of reach from small children.
- Do not flush the protective tape, as it may cause clogging.
- Do not use this product in toilets with drain pipes with diameters smaller than 75 mm (3 in). If used in such toilets, clogging may occur, potentially causing contamination of the toilet bowl or floor. Such damages are not covered under warranty.
- Do not use bidet or cleaning functions while this product is in use.

## Storage Instructions

- Do not store in high temperature or high humidity environments. Avoid using or storing near fire.
- For long-term storage, avoid direct sunlight, high temperatures, and high humidity.

## Warranty Period

- The product warranty period is one year from the date of purchase.
- If the product is defective, it will be replaced free of charge within the warranty period.

## Warranty Coverage

- The above warranty applies only to the product itself. The manufacturer or seller assumes no responsibility for damages caused by the use of this product, including damage to other products or property.

